

# MONTHLY MEMBERSHIP PROGRESS REPORT

LOCATION WISCONSIN

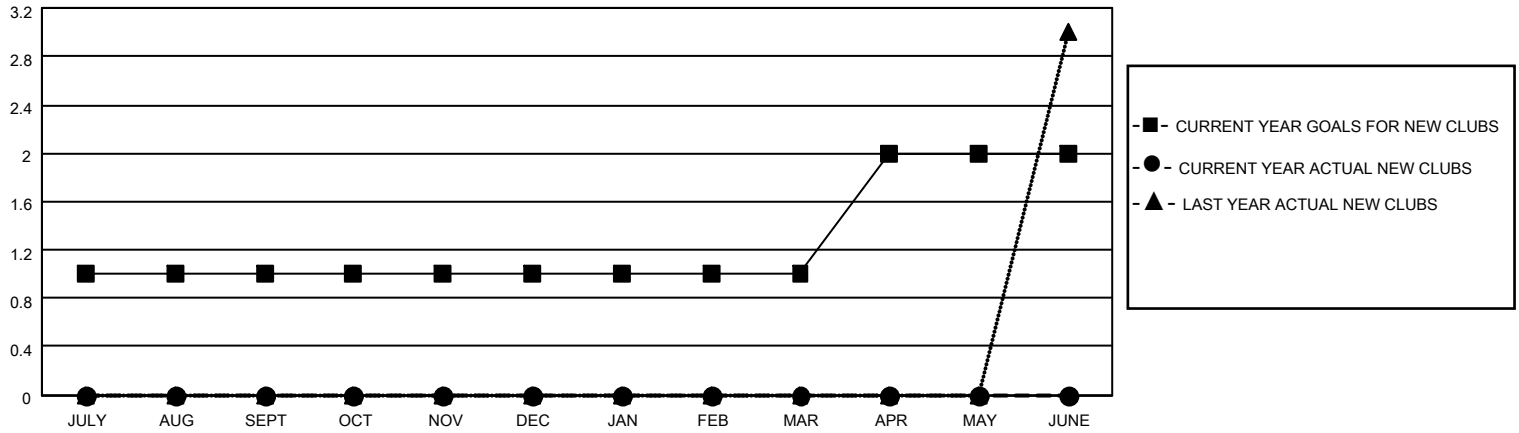
District 27 D1

Results as of: 11/30/2021

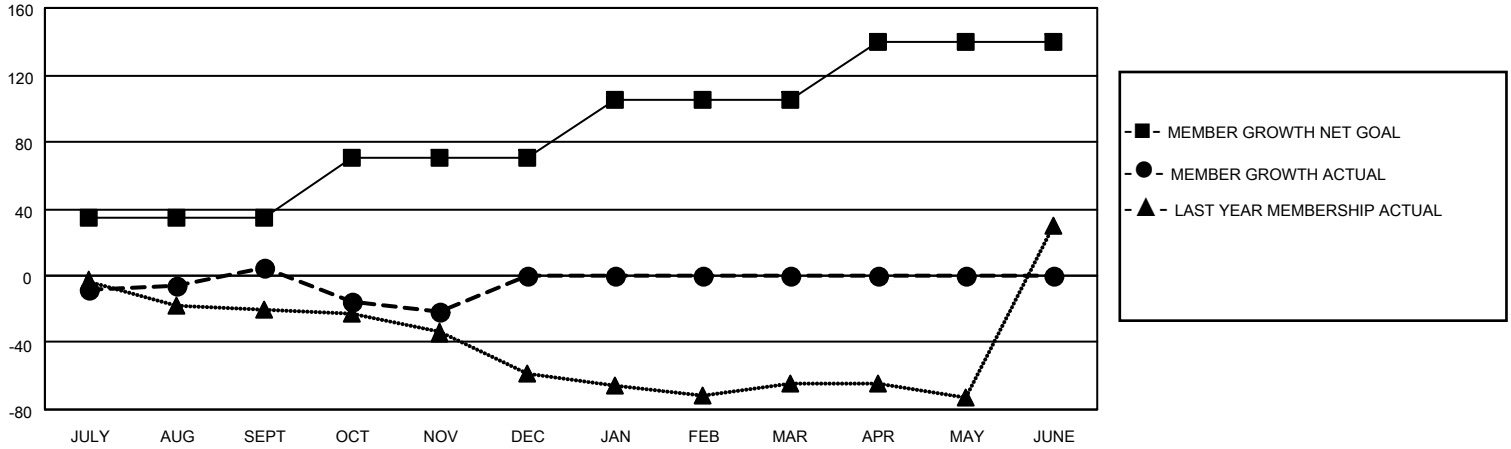
Clubs			
RESULTS FOR 2021-2022			
QUARTER	NEW CLUB GOAL	NEW CLUBS	DROPPED CLUBS
JULY/AUG/SEPT	1	0	0
OCT/NOV/DEC	0	0	1
JAN/FEB/MAR	0	0	0
APR/MAY/JUNE	1	0	0

Members			
RESULTS FOR 2021-2022			
QUARTER	MEMBER GROWTH NET GOAL	MEMBER GROWTH ACTUAL	DROPPED MEMBERS ACTUAL (including transfers)
JULY/AUG/SEPT	35	46	38
OCT/NOV/DEC	35	18	42
JAN/FEB/MAR	35	0	0
APR/MAY/JUNE	35	0	0

**GOALS AND ACTUAL NEW CLUBS CUMULATIVE**



**GOALS AND ACTUAL MEMBERS CUMULATIVE**



**DROPPED CLUBS: 1**

**26 CLUBS OF 61 ADDED 1 OR MORE NEW MEMBERS**

**GENDER DISTRIBUTION**

MALE	1,461 (68.62%)
FEMALE	668 (31.38%)
NON BINARY	0 (0.00%)
PREFER NOT TO ANSWER	0 (0.00%)

**DROPPED MEMBERS**

[CLICK HERE FOR CUMULATIVE MEMBERSHIP DATA](#)

DECEASED	7
CLUB CANCELLED	0
OTHER	73
<b>TOTAL</b>	<b>80</b>

TOTAL FAMILY UNIT MEMBERS	480
FAMILY MEMBERS PAYING HALF DUES	242